

# *Dealmaster Pro manual for Duplimate customers*

---

## **Table of Contents**

<a href="#">Installation</a> .....	2
<a href="#">Starting DmPro</a> .....	3
<a href="#">Standard workflow for tournaments</a> .....	5
<a href="#">For classes</a> .....	9
<a href="#">Appendix 1; DmPro installation</a> .....	11
<a href="#">Appendix 2; Batchwise workflow</a> .....	13
<a href="#">Appendix 3; Deeper analyzes</a> .....	20

## **To you, who never read manuals**

To get handrecords with makeable contracts:

1. WinDup/Archive/New (and duplicate the boards)
2. Dealmaster/Miscellaneous/Import deals

\*\*\*\*\*

If you want to duplicate (and analyze) several sessions batch-wise:

- Deal and duplicate [in WinDup]
- Import all sessions into DmPro's "Browse File"
- "Browse selected deals"; select all sessions and **pre**-print all deals.
- "Browse selected deals" (again); select and print one session at a time.

# Installation

## 1. Install the WinDup package

See the [manual to the WinDup package](#)

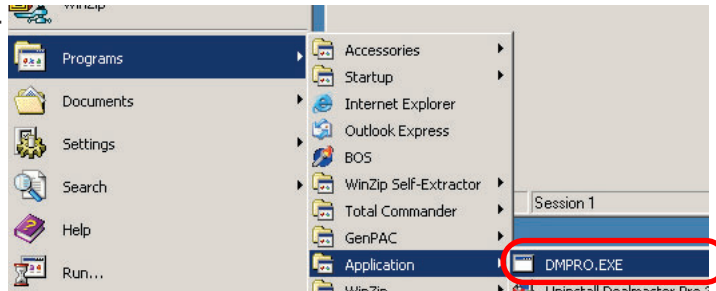
## 2. Install DmPro

We recommend that you install to the default folder C:\

If you have problems with the installation of DmPro; see [Appendix 1](#)

## 3. DmPro validation

Start DmPro via  
Start/Programs/Application



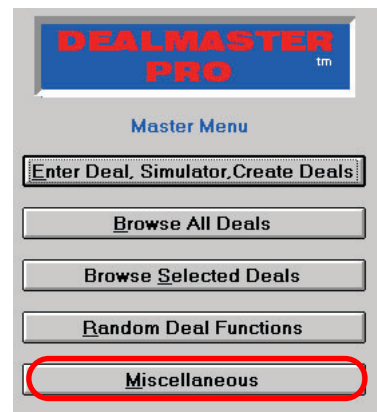
Enter DM's  
serial number  
(you find it on  
the CD)

Enter the DEALMASTER PRO Serial Number:



(The Serial No. is on the CD)

When DM's Master Menu appears, choose Miscellaneous



Click  
"Setup and Preferences"

and enter the identification  
that you want to appear on  
the print-outs (typically = the  
club's name).

## Miscellaneous Functions Menu

Setup and Preferences

Distribution Points Table

### Setup and Preferences

You may change these settings at any time. See Miscellaneous Menu option.

Enter the Title to appear at the top of printouts. This will normally be your Name or the name of your company.

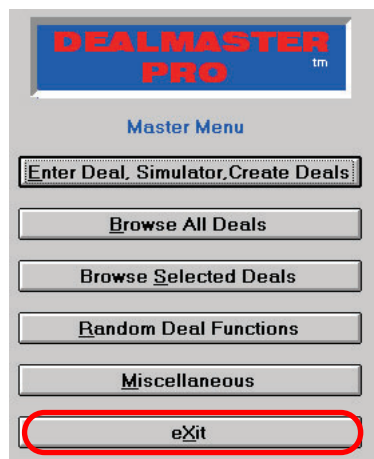
Our Clubname

Do you want computer to fill 4th hand automatically when

Click OK to confirm the settings and  
you will revert to the Master Menu

OK

Exit DmPro and the installation is completed.

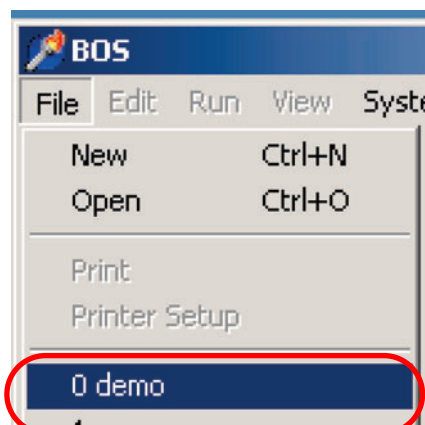


## Starting DmPro via the BOS

Double-click the BOS icon (on the desktop) to start your first WinDup-DmPro session.

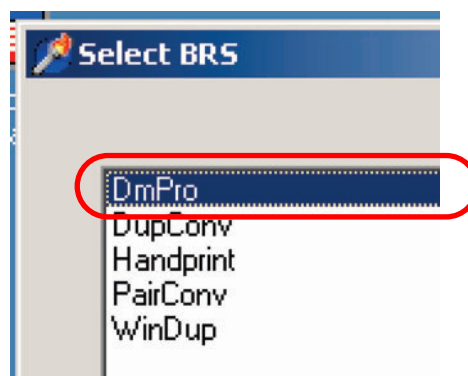


We suggest that you open the "demo" event.



then "Select BRS" and Run DmPro

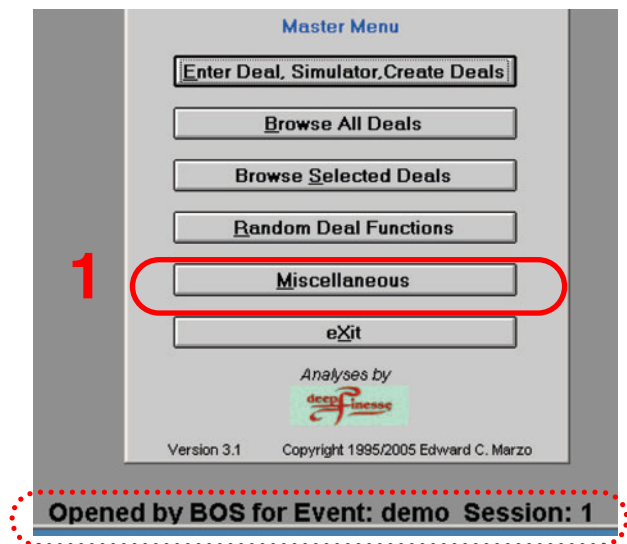
(If you have problems with this part, see further the BOS manual.)



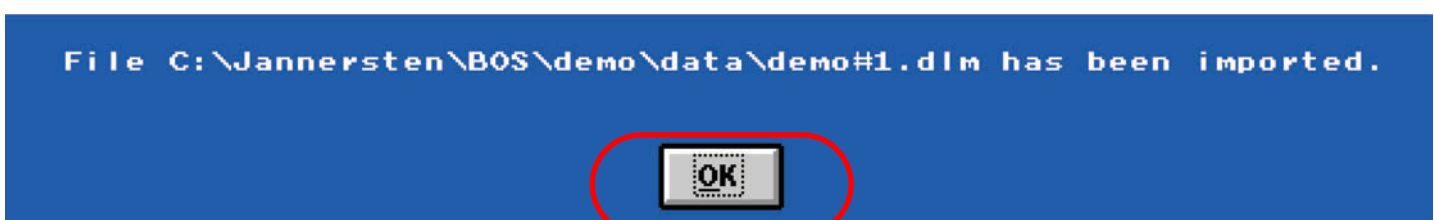
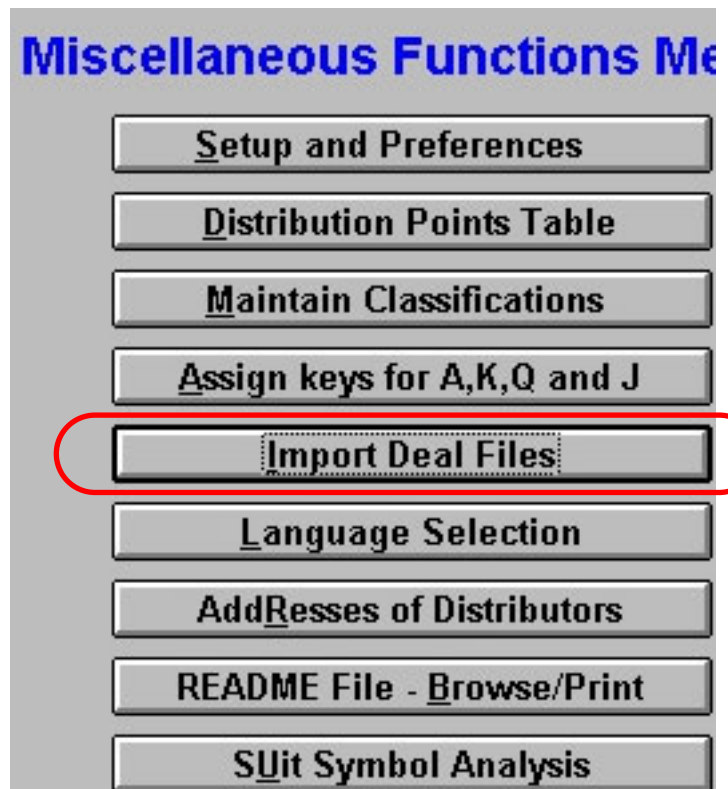
DM's Master Menu should now show (at the bottom) that the event "demo" has been opened.

The importion of the "demo" deal file will not be completed, however, until you have:

1. Chosen "Miscellaneous
2. Clicked "Import Deal Files"
3. Selected "dlm" (at the bottom of the list (and confirmed with OK)



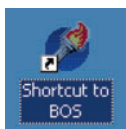
2



# Standard workflow for tournaments

## 1. BOS

### 1a. Start BOS



### 1b. Take **File/New** or (faster) Ctrl+N

You can call your files whatever you like, but we suggest that you use filenames on the form:

YYMMDDSS where:

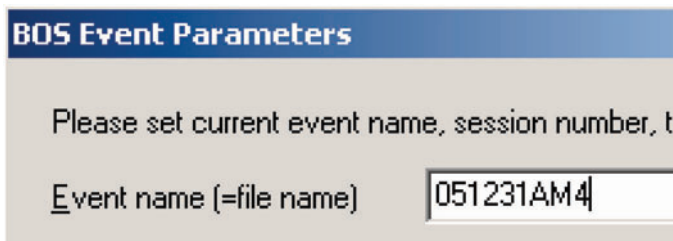
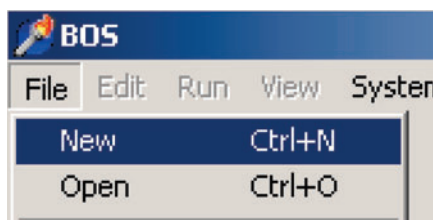
YY = year, e.g. 04

MM = month, e.g. 01

DD = day, e.g. 28

SS = session ID, for example a.m.

where the date is when the deals are intended to be played.

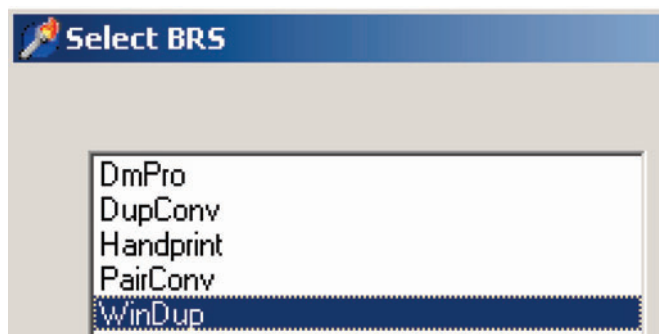


## 2. WinDup

2a. Select BRS WinDup (in BOS) and the WinDup software will be launched, c.f. the [Duplimate manual](#)

2b. **Duplicate** the boards

2c. **Close** WinDup



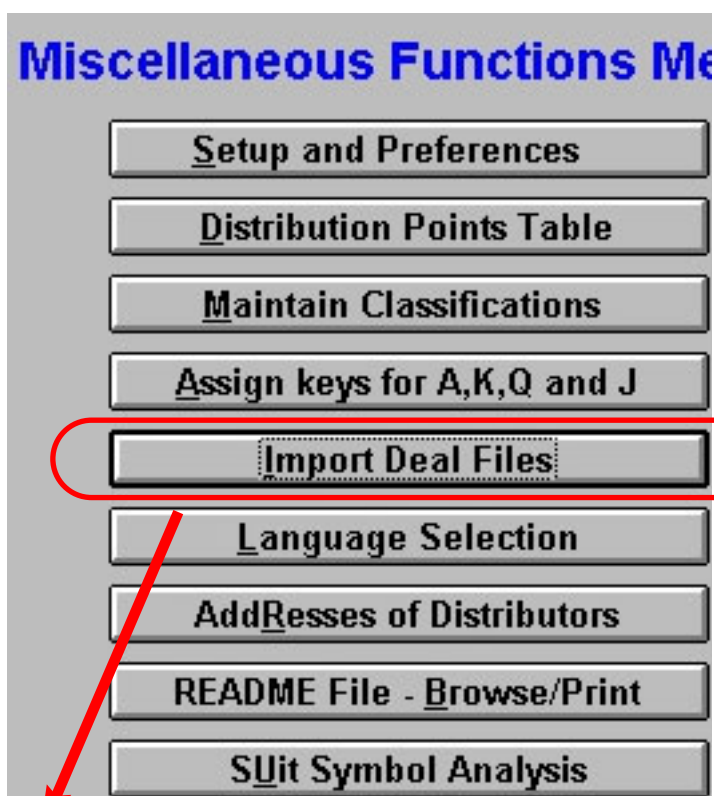
## 3. DEALMASTER

Select BRS (in BOS) and Run DmPro.

Follow the path as shown to the right and below.



1



2

## Select the type of file to be imported:

- Dealmaster File  Dealmaster File [EXPORT.DBF/FPT]
- Bridge Playing Programs:  PBN file (including GIB)  
 \* Q-Plus (English BDE)  
 \* Q-Plus (French BDF)  
 \* Q-Plus (German BDD)  
 \* Microbridge (HND)  
 \* Bridgemate  
 \* Perfect Partner
- Card Dealing Machines:  \* Autodealer (BRI)  
 Autodealer (BRE)  
 Duplimate (DHP)  
 Duplimate [DLM for Windows]

\* = Not yet operational

3

OK

Note:

Do NOT enter a session name in the dialog below! i.e. leave the field "Enter Session Name" as is.

### Output Options (A,B,C,D,E,F,G) for selected/imported Deals

Number of Selected Deals: 1      Enter Session Name: **YYMMDDSS**  
Session Date: 02/15/2004

Option (Select 1 or more)

**A**  Add selected deals to Browse File      Classify selected deals

**B** Select Deal Printouts desired:  
 1 deal/page     2 deals/page     3 deals/page     4 deals/page

**C** Select any Hand Record printouts desired:  
 Print North, South, East and West hands     Print South only  
 Print North and South hands only     Print East only  
 Print East and West hands only     Print West only  
 Print North only     Print Date    Color Choice:

**D** Indicate "Practice Bidding" Printouts wanted:  
Print Sheet for:  North  East  South  West    Format:  3 Across  
 4 Across

**E**  Print Goldway Practice Bid format (Used by Bobby GOLDman-Paul SoloWAY)

**F**  Create files for GIB, Q-Plus, Microbridge, BridgeMate, Perfect Partner, DUPLIMATE & AUTODEALER machines

**G**  Print Traveller with cards held by N,E,S and W

\* = Option to create output Text file

On Printouts, show Dealer and Vulnerability?  Yes  No

Enter text to appear at top of "Hand Record" or "Practice Bidding" Printout:

You can enter an optional text here. E.g. "Happy birthday, Jack!"; or "Note that next weeks game starts 10:30 (not 11:30)", etc.

Use previous text  
 Check here to print line in 14 pt bold

OK

Show makeable contracts on Hand Record?

Yes No

## Determining Makeable Contracts

Dealmaster Pro and Deep Finesse will determine most makeable contracts. In order to keep processing time to a practical value, some remote possibilities are not examined. For example, if N/S have six spades and less than 13 HCP, the possibility of a spade contract for N or S may not be examined.

In the following, you may choose the "Standard" tests or "More Comprehensive" tests. The "More Comprehensive" tests will take about 20% longer to complete and will result in more makeable contracts being displayed.

Determine Makeable Contracts with:



(Standard Tests)

More Comprehensive Tests

It takes quite a while to analyze the deals...



## Print Hand Record for Four Hands

- Three across (18/page)
- Four across (24/page)

Enter text for large print in upper right corner of the Hand Record (max. 14 characters)

Thursday night

OK

## HAND RECORD FOR ALL FOUR HANDS

Print HCP on Hand Record

Show Preview of Printout before Printing

Show Printer Dialog (enables entering Copy Count, etc.)

A4 paper (not 8.5" x 11")

Prepare Output TXT file

Prepare HTML file

OK

It might be necessary to change these settings.  
The following dialogs are selfexplanatory.

Example of output:

**a** Our Clubname    **b** test 10/27/02  
**c** Happy birthday, Jack!

**d** Thursday night

<p><b>1</b></p> <p>♠ K Q 4 ♥ 10 6 5 3 ♦ K 9 5 ♣ K 10 4</p> <p>♠ A 10 ♥ K 8 7 ♦ Q 10 4 2 ♣ J 5 3 2</p> <p>11 10    3 16</p> <p>♠ J ♥ A J 4 2 ♦ A 8 7 ♣ A Q 9 8 6</p> <p><i>Dir: N</i> <i>Vul: None</i></p> <p>♠ ♣ ♣ ♣ ♣ NT N 5 - 4 - 4 S 5 - 4 - 4 E - - - 1 - W - - - 1 -</p>	<p><b>2</b></p> <p>♠ 7 6 5 4 ♥ K 6 3 ♦ K 7 6 5 ♣ Q J</p> <p>♠ Q 10 2 ♥ 9 8 ♦ A Q J ♣ A 9 7 4 3</p> <p>9 13    1 17</p> <p>♠ AK 9 8 3 ♥ A Q J 5 ♦ 2 ♣ K 10 8</p> <p><i>Dir: E</i> <i>Vul: N-S</i></p> <p>♠ ♣ ♣ ♣ ♣ NT N - - 3 4 3 S - - 3 4 3 E - - - - - W - - - - -</p>	<p><b>3</b></p> <p>♠ A 5 ♥ K Q 5 4 ♦ 10 7 5 2 ♣ A 4 3</p> <p>11 13    11 5</p> <p>♠ ♣ ♣ ♣ ♣ NT N - - 3 4 3 S - - 3 4 3 E - - - - - W - - - - -</p>
---	--	--

Note how the various items are presented in the header

**a** "Your clubname" from [Setup](#);

**b** filename and date from [Output options](#);

**c** Additional comments from the bottom part of [Output Options](#);

**d** Headline from the [Print Handrecord dialog](#)

Back to [Table of contents](#)

# FOR CLASSES

You can tailormake a set of deals in WinDup (in Edit mode) or in DmPro (Enter/Simulate/Create deals).

Regardless of which route you take, you will come to the Output Options dialog. Tick "Add selected deals"

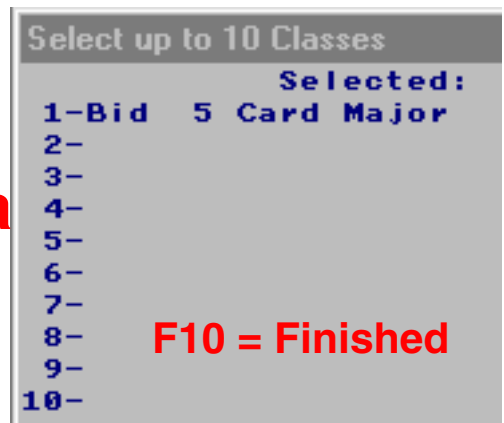
You have now two possibilities:

- You can enter your file with Session name and Session date (as entered in the upper right corner) as file reference.
- or
- if you click "Classify selected deals", can you select an other reference for the set than filename and date

How to classify with filename and date as reference is described under the [batch-function](#). We will therefore describe the latter alternative here.



**2a**



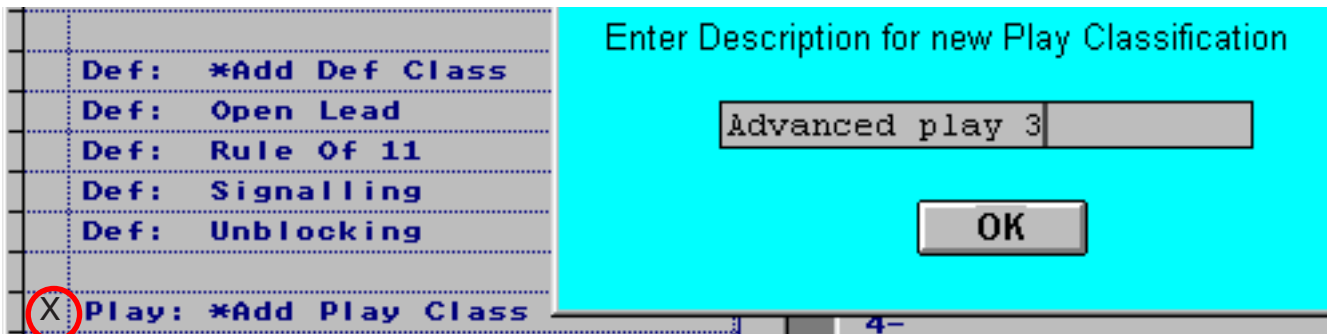
**2a**

If you have created a set with 5-card major deals, you should of course save these with the description "5 Card Major".

[Next page](#)

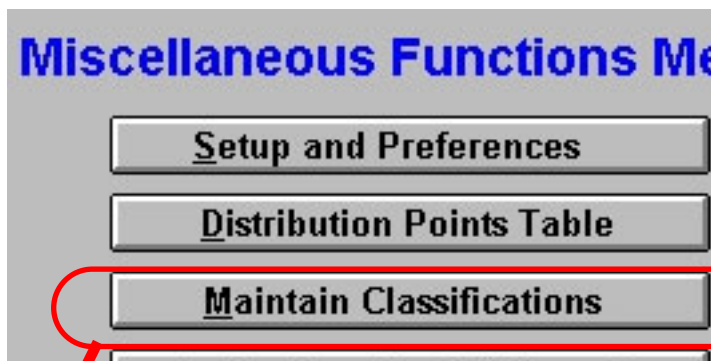
**2b**

If you have composed a set of deals for a class on advanced play, you can add a suiting description to the list:



**3**

You can anytime amend an existing classification (or add a new) via the Miscellaneous/Maintain Classifications option



If, for example, you would like to change "Advanced play 3" to "Play Monday a.m.", this is where you do it.

F10 when finished.	
Group (B/D/P)	Description
D	Unblocking
P	** Play **
P	Advanced Play 3
P	Cross-trump

Back to [Table of contents](#)

## APPENDIX 1 Dmpro may be installed under Windows 95/98/2000/ME/NT/XP

Dealmaster Pro requires about 35 MB of disk space. Install only if you have 40+ MB free.

**Installation:** Insert the Dealmaster Pro CD. The install program should start automatically. Unless you are an experienced computer user, we highly recommend that you let DM Pro install in the default folder: C:\DMPRO. If the install program does not start automatically, execute the SETUP.EXE file on the CD as follows: when you insert the CD, if a window appears with an option entitled RUN SETUP, select that option. Otherwise: either [1] use Windows Explorer to locate file SETUP.EXE on the CD (identified in the Explorer as "Setup...Application"); then double click on it; or [2] select Start, then Run; enter x:\SETUP.EXE where 'x' is the Drive letter of your CD drive. Example H:\SETUP.EXE where H is your CD drive.

Installation is complete when "Installation Complete" message appears. **To create a shortcut** to Dealmaster Pro, use the leftmouse to drag the Diamond icon containing "DMPRO.EXE" from the "Application" group to your desktop.

*If you receive one or more messages indicating File does not exist, ignore all of those messages (about 95 of them). When the "Installation Complete" message occurs, click OK and then COPY ALL the files on the CD to the folder where Dealmaster Pro is installed (C:\DMPRO unless you installed in a different folder.)*

***Your Display must be set to Small Font.*** (In Windows, go to Start-Settings-Control Panel-Display-Settings). DM Pro works most effectively with screen resolution set at 800 x 600 or higher. If your resolution is 640 x 480, the task bar must be hidden when DM Pro is open.

There are six .EXE files: **Execute DMPRO.EXE only.**

***If you start Dealmaster Pro and the program does not appear to be operating properly, read the file TECHNOTE.TXT on the CD***

Dealmaster Pro is licensed to you for use on your computers only. If you have multiple computers (eg, one at home and one at work), you may install it on each. Your license does not permit you to give, sell or lease the DM Pro CD or any copy of the program to other persons for their use.

**To create deals for Club Play, ALWAYS use the option on the Deal Edit Screen.** (Important to eliminate remote chance of duplicate deals.)

**Manual:** Dealmaster Pro does not have a printed manual. Rather, its manual is built into the program's "online" Help. The first ten topics in the Help Menu provide extensive background information. We recommend that you print and read them. Occasionally review them for fresh insights ***When you select a Help topic to print, it does not print until you close Help.***

The DM Pro Simulator uses the Random Deals file **to seed** its deal generator. When installed, this file has 100,000 deals. We recommend that you build this file to 300,000 or more deals (each 100,000 requires about 8 MB). To do this, select option 4 from the Main menu, then select "Create more Random Deals". You can do this in several sessions ... say 100,000 at a time.

Notes of revisions are under the "News" topic in Help, not in a README.TXT file.

Remember: **ALWAYS READ THE SCREEN!**

**See our Website ([dealmaster.com](http://dealmaster.com)) to download the latest version of DM Pro!**

***If you'd like some "hand-holding" as you get started, contact us. We're always happy to help!***

Dealmaster Pro has numerous features and options. You will do best to learn them gradually. If you teach Bridge, we recommend that you follow the recommendations below. But if you are anxious to experiment with the Simulator (Deal Generator), you may want to skip directly to the DM Simulator by selecting the first option on the Master Menu and then selecting the "DM Simulator". There are help screens when you get into the Simulator and several Help topics re the Simulator. Also, file DFNOTES.DOC on the CD has extensive documentation of the Simulator and its relationship to Deep Finesse.

We encourage you to read and understand the basics as covered in the first ten topics in the Help menu. The key feature is summarized here: you will be building a file of deals which are of particular interest to you: deals that you want to teach and/or deals that you played and want to record for future reference, etc. This file is called the "Browse File". It is described in the Help topics: "Overview of Dealmaster Pro", "Fundamental Points to Keep in Mind", and "Browse File". You will refer to deals in the Browse File either by the Session Name/Date you assign to them or by the way you classify them (e.g., "I want to classify this deal under "Stayman" and "End Plays")

Next, get an idea of how DM Pro works by experimenting with the features of the "Deal Edit Screen", the single most important and powerful screen in Dealmaster Pro. To do this, read the Help topic "Deal Edit Screen - tutorial".

Dealmaster Pro has numerous printout formats and options. See Help topics "Printouts Available" and "Printouts". When you select a "Print" option, you will be given options to indicate what data you want on the printout ("I just want North and South and the auction and I want four deals per page.").

The standard Windows Printer Dialog box (which enables changes to printer settings, copy count, etc) does not display unless you ask for it. Before each printout, you have an option to indicate if you want to see the Printer Dialog box.

DM Pro has two deal generators. The more powerful is the Simulator, which is initiated from the Deal Edit Screen. The basic deal generator is initiated from the fourth option on the Master menu.

[Dates Format \(MM/DD/YY or DD/MM/YY\):](#) See Help Topic "Dates".

[Deep Finesse functions.](#) Read Help topic "Deep Finesse" for a complete description.

**[To create deals FOR CLUB PLAY, ALWAYS use the option on the Deal Edit screen. And add the deals to the Browse file for easy recovery in case of a problem. See Help topic "Create Deals for Club Play".](#)**

See our Website ([www.dealmaster.com](http://www.dealmaster.com)) to download the latest version of DM PRO.  
Ward & Sons, Inc. Box 331, Agawam, MA 01001 413-789-4267  
email: [dealmaster@dealmaster.com](mailto:dealmaster@dealmaster.com)

# Appendix 2; BATCH-WISE WORKFLOW

Batch-wise work-flow is to prefer when:

- You duplicate several series of deals and find that the analyzing in DmPro takes too long and/or
- You want to store the analyzed deals in DmPro's "Browse file"

## 1. WINDUP

Duplicate all sets (files) as described in [Standard workflow](#)

## 2. DEALMASTER; Import to Browse File

a. Follow the [standard workflow](#) until you reach the Output options dialog.

b. In the Options options dialog, make sure that the box "Add selected deals to Browse File" is ticked.

c. Then confirm (OK) and close DmPro (click the fox in the upper left corner, or type Alt+F4)

---

d.Repeat a-c for each and all files that you have duplicated.

## 3. DEALMASTER; Deep Finesse analyze

Start DmPro and select "Browse selected deals" from the main menu.

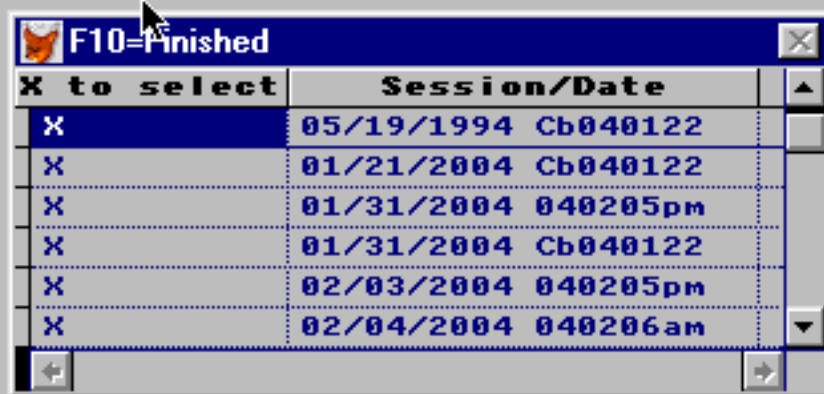


Select "Based on session"

You may browse selected deals based on either Classifications or on a Session.



## For Browsing all Deals for one or more Sessions Enter X for each Sessions to be selected.



X to select	Session/Date
X	05/19/1994 Cb040122
X	01/21/2004 Cb040122
X	01/31/2004 040205pm
X	01/31/2004 Cb040122
X	02/03/2004 040205pm
X	02/04/2004 040206am

Select all files (type "X" in the first column), then F10 to proceed.

## Browse Screen "Select for Print" Options

?

If you plan to Select one or more Deals for Printouts when browsing your file, you may use the following to control the Board Numbers and Printouts:

- Check here if you want the deals you select to be combined under one session name with Board Numbers assigned in the sequence you select the deals.

Enter a name for the combined session:

Enter a Date for the combined session:

OK

**Do NOT tick or write anything in this dialog:** just click OK to bypass it.

**Browse File F10=Finished. F9=make wider; F8=make window narrower.**

Deal#	A	Source	Session Date/Name/Bd #	Classifications
10303			05/19/1994-Cb040122 -#1	
10304			05/19/1994-Cb040122 -#2	
10305			05/19/1994-Cb040122 -#3	
10306			05/19/1994-Cb040122 -#4	
10307			05/19/1994-Cb040122 -#5	
10308			05/19/1994-Cb040122 -#6	
10309			05/19/1994-Cb040122 -#7	
10310			05/19/1994-Cb040122 -#8	
10311			05/19/1994-Cb040122 -#9	
10312			05/19/1994-Cb040122 -#10	
10313			05/19/1994-Cb040122 -#11	
10314			05/19/1994-Cb040122 -#12	
10315			05/19/1994-Cb040122 -#13	
10316			05/19/1994-Cb040122 -#14	

-----Classifications-----

**Col. A for Actions:**  
Click or Keyboard enter indicated code:

- E = Edit this deal
- D = Delete this deal
- S = Select this deal for Print**
- X = Select this deal for Export
- F = Select for DeepFin Analysis
- N = View/Change Note

**Resequencing Now OFF**

- Initiate
- Complete
- Abort

For changing the:  
sequence of  
selected deals.  
Session Name/Date.  
Bd No. of the 1st deal  
resequenced.

**a** Change Propagate Feature: Now ON

- a. First, "Change Propagate" to ON
- b. Then, with the cursor at the first deal, type "S" for "Select this deal for print"
- c. Click "Yes" in the dialog: "Select rest for print"
- d. F10 to proceed to the [next screen](#)

Deal#	A	Source	Session Date/Name/Bd #
10303	S		05/19/1994-Cb040122 -#1
10304			05/19/1994-Cb040122 -#2
10305			05/19/1994-Cb040122 -#3
10306			05/19/1994-Cb040122 -#4
10307			05/19/1994-Cb040122 -#5
10308			05/19/1994-Cb040122 -#6
10309			05/19/1994-Cb040122 -#7
10310			05/19/1994-Cb040122 -#8
10311			05/19/1994-Cb040122 -#9
10312			05/19/1994-Cb040122 -#10

**Select rest for Print?**

No Yes

**c**

## Select Printout Formats wanted:

"Hand Record" Printout. "Practice Bidding" Sheets and/or Printouts for making up Boards

Make sure that the first tickbox "Hand Record" is checked, then OK to proceed.

Output Options (A,B,C,D,E,F,G) for selected/imported Deals

Number of Selected Deals: 3      Enter Session Name: YYMMDDSS  
Session Date: 02/15/2004

Option (Select 1 or more)

**A**  Add selected deals to Browse File      Classify selected deals

**B** Select Deal Printouts desired:  
 1 deal/page     2 deals/page     3 deals/page     4 deals/page

**C** Select any Hand Record printouts desired:  
 Print North, South, East and West hands     Print South only  
 Print North and South hands only     Print East only  
 Print East and West hands only     Print West only

Check that (under **C**) the option "Print North, South, East and West hands" is ticked. Then OK to proceed.

Show makeable contracts on Hand Record?

Yes     No

Show makeable "Yes"

and Standard tests (if that is what you want)

### Determining Makeable Contracts

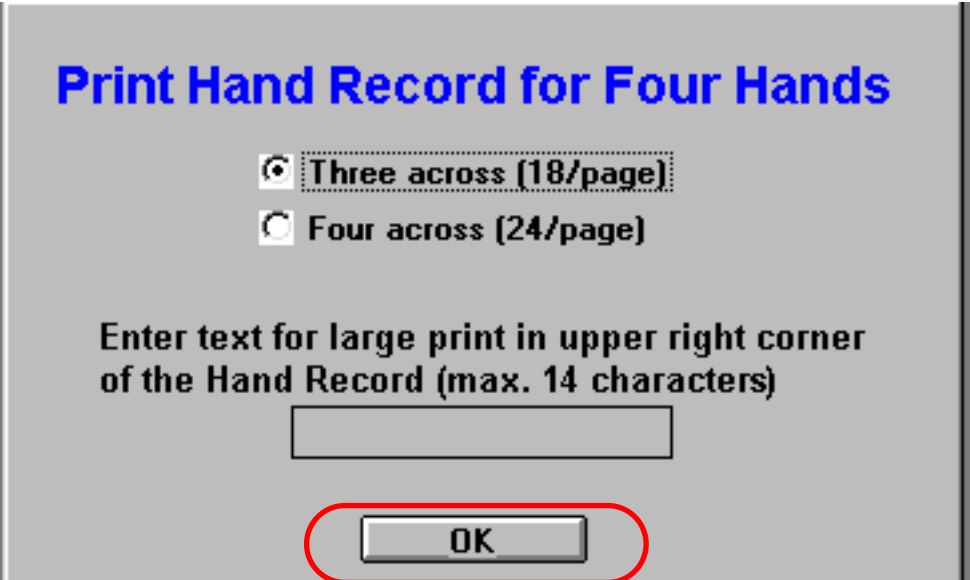
Dealmaster Pro and Deep Finesse will determine most makeable contracts. In order to keep processing time to a practical value, some remote possibilities are not examined. For example, if N/S have six spades and less than 13 HCP, the possibility of a spade contract for N or S may not be examined.

In the following, you may choose the "Standard" tests or "More Comprehensive" tests. The "More Comprehensive" tests will take about 20% longer to complete and will result in more makeable contracts being displayed.

Determine Makeable Contracts with:

Standard Tests  
 More Comprehensive Tests

Just **OK** this one  
(no need to change/enter anything)



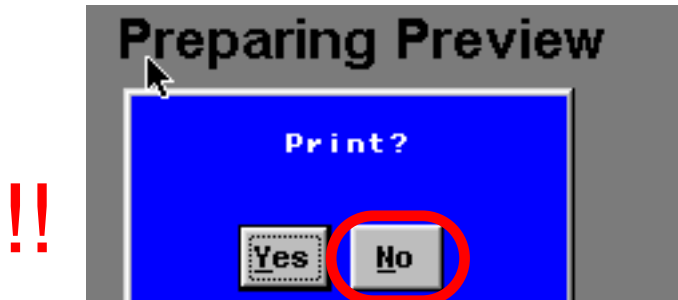
Click "**Show preview**"  
(other settings can be whatever)



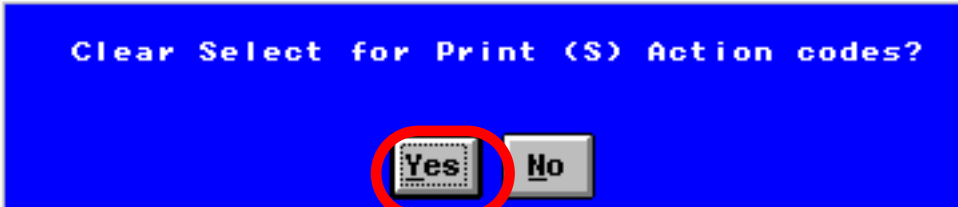
It is important to follow the on-screen instructions on how to **close the Preview window**.



Note that you shall **NOT print** now.



Clear select "Yes"



Close DmPro



Start DmPro (again)  
 Select "Browse selected deals" (again)  
 "Based on Session data/name" (again)  
 then  
 Select one session (the first)  
 and  
 OK the "Browse screen options" (again)

### For Browsing all Deals for one or more Sessions

Enter X for each Sessions to be selected

F10=Finished	
X to select	Session/Date
X	01/31/2004 040205pm
	01/31/2004 Cb040122
	02/03/2004 040205pm
	02/04/2004 040206pm

S (for Select) all deals (again)  
 and F10 to confirm

Deal#	A	Source	Session Date/Name/Bd #
10303	S		05/19/1994-Cb040122 -#1

Select Hand Record

### Select Printout Formats wanted:

"Hand Record" Printout. "Practice Bidding" Sheets and/or Printouts for making up Boards

This time it is important to enter the actual session date.

### Output Options (A,B,C,D,E,F,G) for selected/imported Deals

Number of Selected Deals: 3      Enter Session Name: **WMMDDSS**  
 Session Date: **02/15/2004**

Option (Select 1 or more)

**A**  Add selected deals to Browse File      Classify selected deals

**B** Select Deal Printouts desired:  
 1 deal/page     2 deals/page     3 deals/page     4 deals/page

**C** Select any Hand Record printouts desired:  
 Print North, South, East and West hands     Print South only  
 Print North and South hands only     Print East only  
 Print East and West hands only     Print West only

Show makeable contract "Yes" (again)  
 and  
 Select "Standard tests" (again)

This time you should fill in the headline that you want to appear on the Handrecord for the selected session.

### Print Hand Record for Four Hands

Three across (18/page)  
 Four across (24/page)

Enter text for large print in upper right corner of the Hand Record (max. 14 characters)  
**Thursday night**

OK

Clear Select for Print (S) Action codes?

“Clear Select” **Yes**  
if the print came out OK



Browse File F10=Finished. F9=make wide

Deal#	A	Source	Session Date/Name/Bd #
10367	D		01/31/2004-040205pm -#1
10403	D		01/31/2004-040205pm -#1

“D” for Delete  
F10 to confirm

then  
back to the Main Menu  
and  
•Select “Browse selected deals” (again)  
•“Based on Session data/name” (again)  
•**Select one session** (the first of the remaining)  
etc.  
till there are no more deals in “Browse selected deals”

[Back to table of contents](#)

## Dealmaster Pro with Deep Finesse Analyses

Deep Finesse (DF) is a 100% accurate double dummy analyzer. It can determine accurately whether any given contract can be made, assuming best play by declarer and defense. The best line of play can be seen by the user by following simple on screen notations of winning and losing cards as each trick is played.

Through a special arrangement with the author of DF, Dealmaster Pro (DM Pro) can prepare statistical analyses of sets of deals created by the DM Pro deal generators (initially, by the DM Pro Simulator only). The analyses include not only number of deals which make or fail a specified contract, but also number of tricks available at one or more declarer/suit combinations; also analyses of opening leads.

For example, if 200 deals are created by DM Pro for consideration of play by South in 3NT and in Spades, the DF analyzer can be called to make the analyses. The program Deep Finesse does not have to be installed for these analyses. In addition, if DF is installed, the user has the option to call for interactive DF analysis of any of the deals.

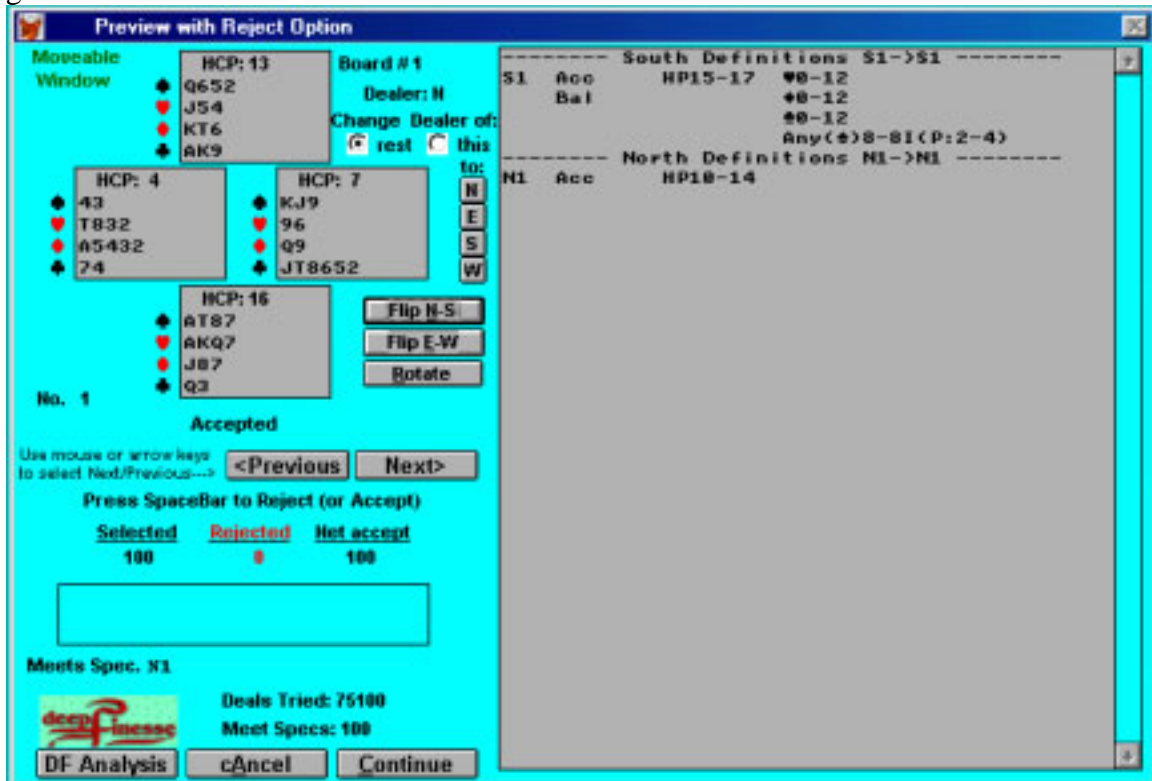
If the specific holdings of a hand on opening lead is entered and deals generated for the declarer, a recap of the number of times each card is a winning opening lead is displayed. This can be very valuable for analyzing the choice a user made against a particular contract.

The following describes with an example the steps available and the results of DF analyses.

The example used: South has a balanced hand with 15-17 HCP. North has 10-14 HCP. North and South have an eight card fit in spades, either 6-2, 5-3, 4-4, South having the longer holding. A set of 100 deals meeting these specs is generated by the DM Pro Simulator. **See Appendix for complete detailed instructions of how to enter these specs into the DM Pro Simulator.**

1. Use the DM Pro simulator to generate 100 deals to these specs. (Note: Users may want a larger sample for greater statistical accuracy.)

2. The following standard DM Pro “Preview” screen appears when the deals are generated:



This screen enables the user to step through the deals generated to insure the deals are indeed what he had in mind. He can “Cancel” if he realizes his specifications were inaccurate or incomplete.

3. Select the “DF Analysis” option. **When the DF Analysis is complete, control will be turned to this screen. User then can select “Continue” to indicate what is to be done with the generated deals ... or may select “Cancel” ... or even select another DF Analysis.**

4. The following “Select up to 4 options .. ” screen will appear

**Select up to 4 options for Deep Finesse analysis**

3N or 4S? S:Bal 15-17hcp; N: 10-14hcp; Sp in N/S:62,53 or 44  
 Enter above a description of the project

To calculate the number of tricks available for a given Declarer/Suit, make entries here-->>>

	♣	♦	♥	♠	NT
North	<input type="checkbox"/>	<input type="checkbox"/>	<input type="checkbox"/>	<input type="checkbox"/>	<input type="checkbox"/>
South	<input type="checkbox"/>	<input type="checkbox"/>	<input type="checkbox"/>	<input checked="" type="checkbox"/>	<input checked="" type="checkbox"/>
East	<input type="checkbox"/>	<input type="checkbox"/>	<input type="checkbox"/>	<input type="checkbox"/>	<input type="checkbox"/>
West	<input type="checkbox"/>	<input type="checkbox"/>	<input type="checkbox"/>	<input type="checkbox"/>	<input type="checkbox"/>

Entries below will calculate if each of the selected Contracts makes or not.

	N	S	E	W
1	♣ <input type="checkbox"/>	<input type="checkbox"/>	<input type="checkbox"/>	<input type="checkbox"/>
	♦ <input type="checkbox"/>	<input type="checkbox"/>	<input type="checkbox"/>	<input type="checkbox"/>
	♥ <input type="checkbox"/>	<input type="checkbox"/>	<input type="checkbox"/>	<input type="checkbox"/>
	♠ <input type="checkbox"/>	<input type="checkbox"/>	<input type="checkbox"/>	<input type="checkbox"/>
	NT <input type="checkbox"/>	<input type="checkbox"/>	<input type="checkbox"/>	<input type="checkbox"/>
2	♣ <input type="checkbox"/>	<input type="checkbox"/>	<input type="checkbox"/>	<input type="checkbox"/>
	♦ <input type="checkbox"/>	<input type="checkbox"/>	<input type="checkbox"/>	<input type="checkbox"/>
	♥ <input type="checkbox"/>	<input type="checkbox"/>	<input type="checkbox"/>	<input type="checkbox"/>
	♠ <input type="checkbox"/>	<input type="checkbox"/>	<input type="checkbox"/>	<input type="checkbox"/>
	NT <input type="checkbox"/>	<input type="checkbox"/>	<input type="checkbox"/>	<input type="checkbox"/>
3	♣ <input type="checkbox"/>	<input type="checkbox"/>	<input type="checkbox"/>	<input type="checkbox"/>
	♦ <input type="checkbox"/>	<input type="checkbox"/>	<input type="checkbox"/>	<input type="checkbox"/>
	♥ <input type="checkbox"/>	<input type="checkbox"/>	<input type="checkbox"/>	<input type="checkbox"/>
	♠ <input type="checkbox"/>	<input type="checkbox"/>	<input type="checkbox"/>	<input type="checkbox"/>
	NT <input type="checkbox"/>	<input checked="" type="checkbox"/>	<input type="checkbox"/>	<input type="checkbox"/>
4	♣ <input type="checkbox"/>	<input type="checkbox"/>	<input type="checkbox"/>	<input type="checkbox"/>
	♦ <input type="checkbox"/>	<input type="checkbox"/>	<input type="checkbox"/>	<input type="checkbox"/>
	♥ <input type="checkbox"/>	<input type="checkbox"/>	<input type="checkbox"/>	<input type="checkbox"/>
	♠ <input type="checkbox"/>	<input type="checkbox"/>	<input type="checkbox"/>	<input type="checkbox"/>
	NT <input type="checkbox"/>	<input type="checkbox"/>	<input type="checkbox"/>	<input type="checkbox"/>
5	♣ <input type="checkbox"/>	<input type="checkbox"/>	<input type="checkbox"/>	<input type="checkbox"/>
	♦ <input type="checkbox"/>	<input type="checkbox"/>	<input type="checkbox"/>	<input type="checkbox"/>
	♥ <input type="checkbox"/>	<input type="checkbox"/>	<input type="checkbox"/>	<input type="checkbox"/>
	♠ <input type="checkbox"/>	<input type="checkbox"/>	<input type="checkbox"/>	<input type="checkbox"/>
	NT <input type="checkbox"/>	<input type="checkbox"/>	<input type="checkbox"/>	<input type="checkbox"/>
6	♣ <input type="checkbox"/>	<input type="checkbox"/>	<input type="checkbox"/>	<input type="checkbox"/>
	♦ <input type="checkbox"/>	<input type="checkbox"/>	<input type="checkbox"/>	<input type="checkbox"/>
	♥ <input type="checkbox"/>	<input type="checkbox"/>	<input type="checkbox"/>	<input type="checkbox"/>
	♠ <input type="checkbox"/>	<input type="checkbox"/>	<input type="checkbox"/>	<input type="checkbox"/>
	NT <input type="checkbox"/>	<input type="checkbox"/>	<input type="checkbox"/>	<input type="checkbox"/>
7	♣ <input type="checkbox"/>	<input type="checkbox"/>	<input type="checkbox"/>	<input type="checkbox"/>
	♦ <input type="checkbox"/>	<input type="checkbox"/>	<input type="checkbox"/>	<input type="checkbox"/>
	♥ <input type="checkbox"/>	<input type="checkbox"/>	<input type="checkbox"/>	<input type="checkbox"/>
	♠ <input type="checkbox"/>	<input type="checkbox"/>	<input type="checkbox"/>	<input type="checkbox"/>
	NT <input type="checkbox"/>	<input type="checkbox"/>	<input type="checkbox"/>	<input type="checkbox"/>

Select up to four options in total (top and bottom combined.)

Determine best Opening Lead if Contract will Make  
 Separate Recap for first half and second half  
Above available if 1 or 2 options selected. Provides opportunity to see separate totals for each half of the deals

OK

This screen enables selection of up to four different analyses. Selections at the top enable answers to the question: “How many tricks are available if a specified declarer plays in a specified suit (or NT).” Selections at the bottom enable answers to: “Do the checked contracts Make or not?”

In this example, first a description of the project is entered at the top. Next, we ask to look at South for tricks available at Spades and at NT (checks in top section). Next, we ask for analysis of South at 3NT (bottom). Note: although seemingly a duplication, the analysis of tricks available to South in NT and for South at 3NT will provide analysis of best leads to set 3NT.

Observe the option to “Determine best Opening Lead if Contract will make”. Normally, if a specific contract is checked (bottom section), only the winning leads will be captured. If the user wants a recap of best opening leads, make or down, this option provides it.

Observe also the option for “Separate Recap for first and second half”. This has two benefits. If you are interested in estimating the best size for an accurate statistical sample, check this so you will get totals of the first and second halves. If they are reasonably consistent, your smaller size is probably about right. In addition, DM Pro can generate sets of deals under two (or more) sets of specs. Thus, if you create 200 deals with one set of specs and another 200 with another, this enables getting recaps of both at the same time.

When OK is selected, the Deep Finesse Analyzer function is initiated and the following appears:



This displays the analyses by DF as it is being done. The above was paused when Deal 8 was being analyzed. (F9 to pause). Use F10 to Cancel.

While this analysis is being done, DM Pro cannot be used ... but, of course, it can be minimized for execution of unrelated programs.

When the analysis is complete, the first “Recap” is displayed:

Recap of Dealmaster Pro/Deep Finesse Analysis																			
3N or 4S? S:Bal 15-17hcp; N:10-14hcp; Sp in N/S 62,53 or 44																			
Analysis No. 1																			
Decl	Summary of Tricks available							<-----Best Leads (Quantities are No. of Deals)----->				<No. of choices for Best Lead->							
Suit	<7	7	8	9	10	11	12	13	1	2	3	4	1	2	3	4	5	6-9	10+
S ♠	0	0	2	12	35	31	13	7	23	9	21	40	9	7	11	2	4	45	15
Cum	100	100	100	98	86	51	20												
		100%	100%	98%	86%	51%	20%	7%											
Total Tricks available: 1,062																			
Analysis No. 2																			
Decl	Summary of Tricks available							From # of suits =				<No. of choices for Best Lead->							
S NT	<7	7	8	9	10	11	12	13	1	2	3	4	1	2	3	4	5	6-9	10+
S NT	3	7	15	22	27	16	9	1	42	7	22	28	8	22	14	4	4	35	12
Cum	100	97	90	75	53	26	10												
		97%	90%	75%	53%	26%	10%	1%											
Total Tricks available: 951																			
Analysis No. 3																			
Decl Contract	Make		Down		From # of suits =				<No. of choices for Winning Lead->										
S 3 NT	75	75%	25	25%	1	2	3	4	1	2	3	4	5	6-9	10+				
S 3 NT					15	3	3	4	4	6	4	4	2	5	8				
Analysis No. 4 (not requested)																			

In this case, there are three sections for the three analyses requested (South in Spades and in NT and South at 3NT). The left side shows results of declarer play. Here South has exactly 10 tricks available in 35 deals playing in Spades, but has **10 or more** tricks available in 86 deals in Spades. South has 9 or more tricks available in 75% of the deals playing in NT.

South has 1,062 total tricks available playing in Spades, 11.7% more than if played in NT (1062/951).

The right side shows some analyses of best leads. For South in spades, a winning lead is available from one suit only in 42 of the 100 deals. And the opening leader has only one choice for a winning lead on 8 of the deals. To determine a choice, equals are considered one: thus, with K432, user is considered to have two choices. (A missing 4 or 3 does not make two choices: example: a lead from 542 is considered one choice)

Here is a Recap from another analysis:

Recap of Dealmaster Pro/Deep Finesse Analysis																					
Best lead vs 6N?																					
Analysis No. 1																					
Decl	Summary of Tricks available								<-----Best Leads (Quantities are No. of Deals)----->												
Suit	<7	7	8	9	10	11	12	13	From # of suits =		<-No. of choices for Best Lead->										
S HT	0	0	0	0	2	30	43	35	1	2	3	4	1	2	3	4	5	6-9	10+		
Cum	150	150	150	150	150	148	110		1	21	45	48	0	21	2	4	21	63	0		
		100%	100%	100%	100%	99%	79%	23%	<-----No. of Deals where specified card is best lead----->												
Total Tricks available: 1,001									AK	AJ	A7	A5	A4	H8	K	9	6	5	3	A4	A3
									60	58	65	65	65	114	49	73	74	74	74	114	114
Analysis No. 2																					
Decl	Contract		Make		Down		From # of suits =				<-No. of choices for Winning Lead->										
S	6	HT	118	79%	32	21%	1	2	3	4	1	2	3	4	5	6-9	10+				
							0	14	10	8	0	14	1	5	3	9	0				
>																					
<-----No. of Deals where specified card is Winner lead----->																					
									AK	AJ	A7	A5	A4	H8	K	9	6	5	3	A4	A3
									7	6	11	11	11	32	4	14	14	14	14	32	32
Analysis No. 3 (not requested)																					

West held: S-KJ754 H-8 D-K9653 C-43. 150 deals generated where South would play at 6NT. Of the 32 that do not make, the winning lead is always from the heart or club.

The next screen presents additional analyses:

Analysis of results of alternate Decl/Suit or Contract. F10 when finished.														
For	<-Alt-->		#Deals	Alternate			Results for same No. of Deals at Alternate play							
		Trvl			%Deals	Avg	<---How often specified # Tricks available--->							
		or			Alt	Trks/								
		MakDa			Makes	Deal	6+	7+	8+	9+	10+	11+	12+	13
South	3NT	Down	25	S-3NT		7.44	96%	88%	60%					
South	3NT	Down	25	S-Spade		9.80		100%	92%	56%	28%	4%		
South	3NT	Make	75	S-NT		10.20			100%	71%	35%	13%	1%	
South	3NT	Make	75	S-Spade		10.89			100%	96%	59%	25%	3%	
South	NT	5	1	S-3NT	0%	N/A								
South	NT	5	1	S-Spade		11.00						100%		
South	NT	6	2	S-3NT	0%	N/A								
South	NT	6	2	S-Spade		11.00						100%		
South	NT	7	7	S-3NT	0%	N/A								
South	NT	7	7	S-Spade		9.00		100%	71%	29%				
South	NT	8	15	S-3NT	0%	N/A								
South	NT	8	15	S-Spade		9.93			100%	60%	27%	7%		
South	NT	9	22	S-3NT	100%	N/A								
South	NT	9	22	S-Spade		10.14			100%	91%	18%	5%		
South	NT	10	27	S-3NT	100%	N/A								
South	NT	10	27	S-Spade		10.63			100%	96%	56%	7%	4%	
South	NT	11	16	S-3NT	100%	N/A								
South	NT	11	16	S-Spade		11.38				100%	94%	38%	6%	
South	NT	12	9	S-3NT	100%	N/A								
South	NT	12	9	S-Spade		12.44						100%	44%	
South	NT	13	1	S-3NT	100%	N/A								

Analysis of results of alternate Decl/Suit or Contract. F10 when finished.														
For	<-Alt-->		#Deals	Alternate			Results for same No. of Deals at Alternate play							
		Trvl			%Deals	Avg	<---How often specified # Tricks available--->							
		MakDa			Makes	Deal	6+	7+	8+	9+	10+	11+	12+	13
South	NT	12	9	S-Spade		12.44						100%	44%	
South	NT	13	1	S-3NT	100%	N/A								
South	NT	13	1	S-Spade		13.00								100%
South	Spade	8	2	S-3NT	0%	N/A								
South	Spade	8	2	S-NT		7.00		100%						
South	Spade	9	12	S-3NT	25%	N/A								
South	Spade	9	12	S-NT		8.00		100%	75%	25%	8%			
South	Spade	10	35	S-3NT	80%	N/A								
South	Spade	10	35	S-NT		9.11		100%	94%	80%	34%	3%		
South	Spade	11	31	S-3NT	81%	N/A								
South	Spade	11	31	S-NT		9.58	97%		98%	81%	71%	29%		
South	Spade	12	13	S-3NT	92%	N/A								
South	Spade	12	13	S-NT		10.92		100%	92%	85%	77%	38%		
South	Spade	13	7	S-3NT	100%	N/A								
South	Spade	13	7	S-NT		11.71				100%	86%	71%	14%	

This answers the question: For the deals which have a specified result under one option, what happens to those same deals for the other options. The above show that (see fourth line for South) for the 86 deals which make 3NT, 95% make 10 or more tricks in Spades; 67% make 11 or more tricks in Spades.

For the 22 deals in which 9 tricks are available for South in NT, an average of 10.14 tricks are available in South-Spades (a larger sample would probably be desirable for reliability of this figure.)

The next screen:

**Additional Deep Finesse Analyses**

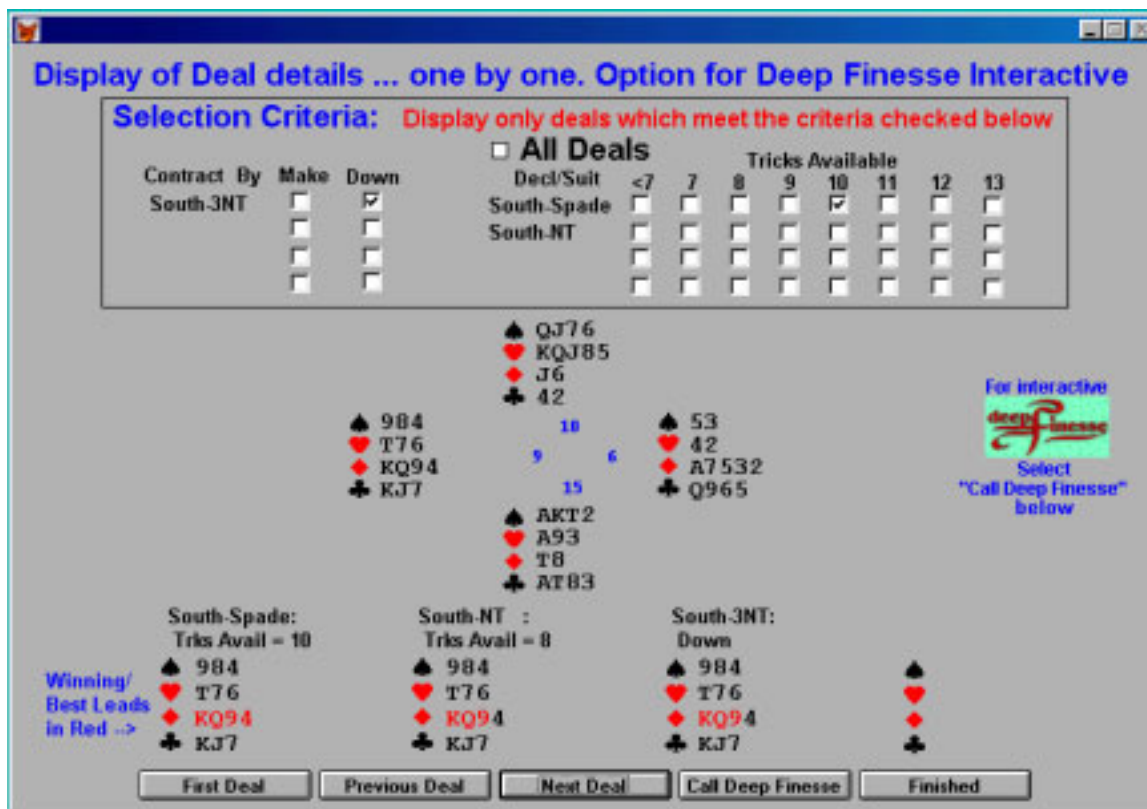
**Review of all or selected Deal details** < - Enables examining one or more deals in detail. All or selected deals may be reviewed. If Deep Finesse is installed, a deal may be opened in Deep Finesse.

**Analysis of Opening Leads** < - For a future version of Dealmaster Pro

**Finished**

enables more detailed analyses (options 1 and 2) or to complete the DF analyses (“Finished”) and return to the DM Pro “Preview” screen.

If the first option is selected, this screen appears:



This enables stepping through the deals one at a time, either all or selected deals. In the above, the user asked to see only deals which do not make 3NT by South but do have ten tricks available in South- Spades. At the bottom, the result of the DF analyses is shown with an indication of the best or winning leads. Here D-KQ94 is the best lead against Spades; D-KQ9 is the winning lead against South NT.

If Deep Finesse is installed, selecting "Call Deep Finesse" will open DF with the current deal active. The user can use all DF functions to explore the deal. Trick play recorded will be stored in the DM Pro database when DF is closed (initially this not implemented).

The user should close DF when finished with each deal. Another can then be selected.

## Appendix

The following provides the detailed steps required to create deals using the DM Pro Simulator for the example in the manual:

South: 15-17 HCP Balanced

North: 8-14 HCP

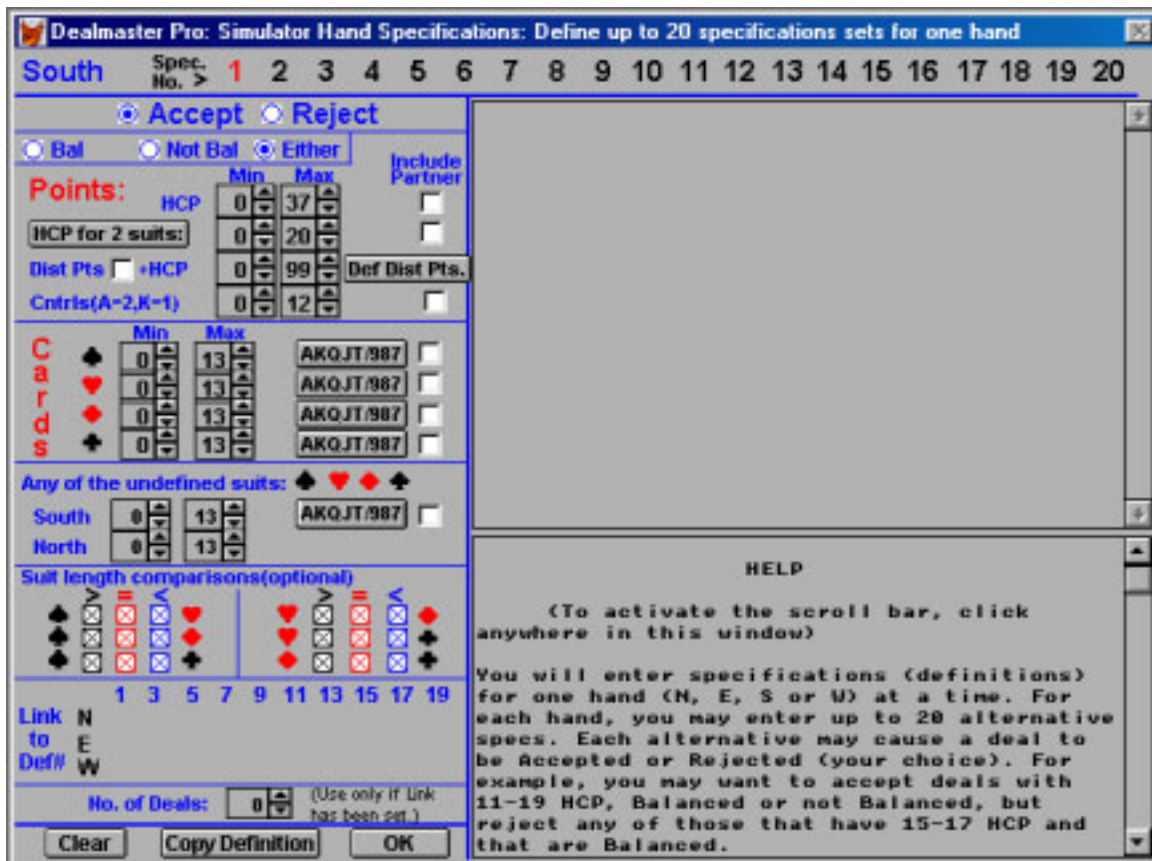
N and S have 8 spades, 6-2, 5-3 or 4-4 with South having the longer

In the following, the various Introductory screens which appear initially and may be coded “Do not show again” are not mentioned. If one appears, read it and press OK

1. Select first option on Master Menu (“Enter Deals, Simulator, Create Deals.”)
2. From the Deal Edit Screen, select “DM Simulator” (see bottom right)
3. When it asks if you want to use the specs from the last session, say No.
4. You should now be in the Simulator Control Center ... as follows:

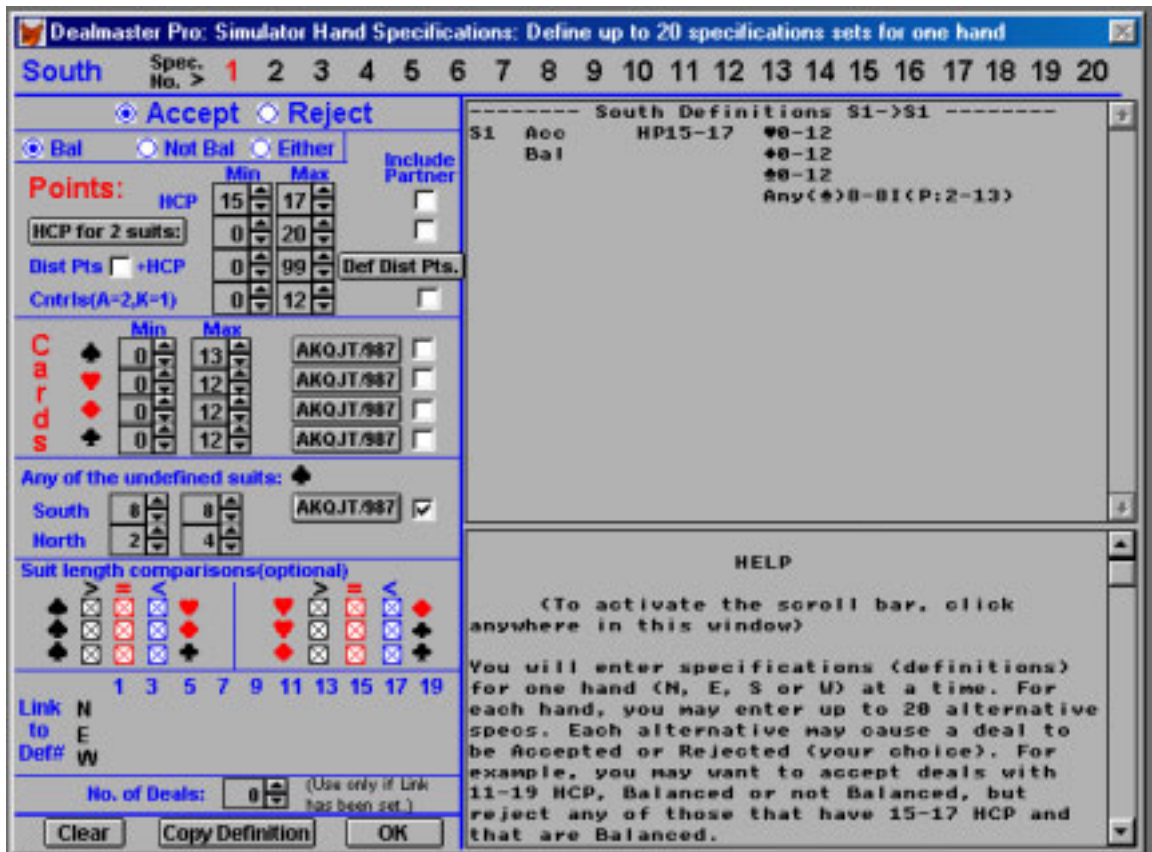


First, enter specifications for South. Initiate this by selecting “Enter Specifications for South”. The following appears:



In this screen, you can enter up to 20 alternate sets of specifications for South (see 1-20 across the top). We will need to use No. 1 of the 20.

The entries to make are given below. When you are finished the screen will look as follows:



Click on “Bal” to indicate hand should be balanced.

Enter Min and Max HCP (15 and 17). See “Points: HCP”

In order to have exactly 8 spades in combination with North, we want to use the feature entitled “Any of the undefined suits”. Initially all suits are “undefined”. To make Spades the only undefined suit, we set the Max for Hearts, Diamonds and Clubs to 12. See section entitled “Cards”

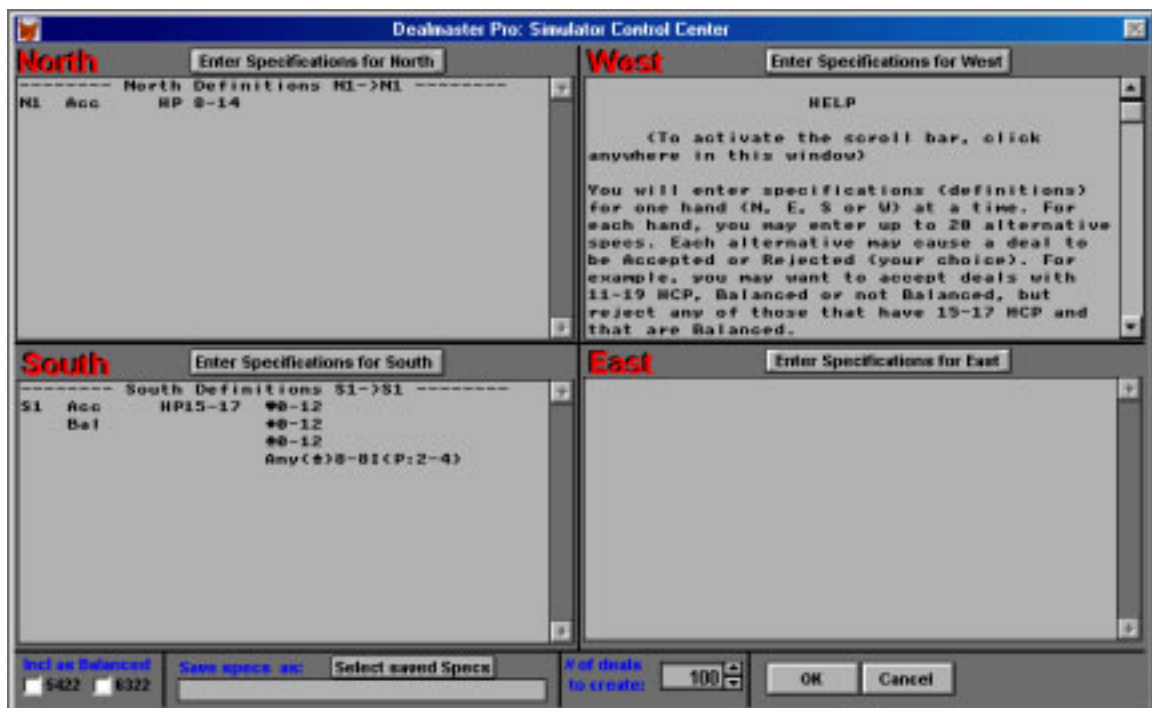
Under “Any of the undefined suits”, we set Min and Max on the South line to 8. THEN, check the white box (just to the right of the button labeled “AKQJT/987”). This box says “Include partner” ... note the caption at the top of the column. The column contains other white boxes for including partner under other circumstances.

Now we can enter how many of the 8 spades should be in North. We enter Min of 2 and Max of 4 on the line labeled North. The combination of the entries on the two lines under “Any of the undefined Suits” will give 6-2, 5-3 or 4-4 in one of the undefined suits. Since the only undefined suit is Spades, we will get that in Spades.

Click OK to return to the Simulator Control Center.

Now you can enter specs for North. Select “Enter Specifications for North”. When you get a screen that looks like the screen for South above, enter Min and Max HCP as 8 and 14. Then click OK.

You should now have a screen that looks as follows (except the “No. of Deals to Create” will be 4). Note that your specs are recapped for reference in the North and South Boxes. Thus North Spec 1 is to Acc(ept) a deal if it has 8-14 hcp.



Select the No. of Deals you want generated (this example shows 100) and press OK. The deal generator will go to work. When finished, you will have the Preview screen illustrated in the manual.